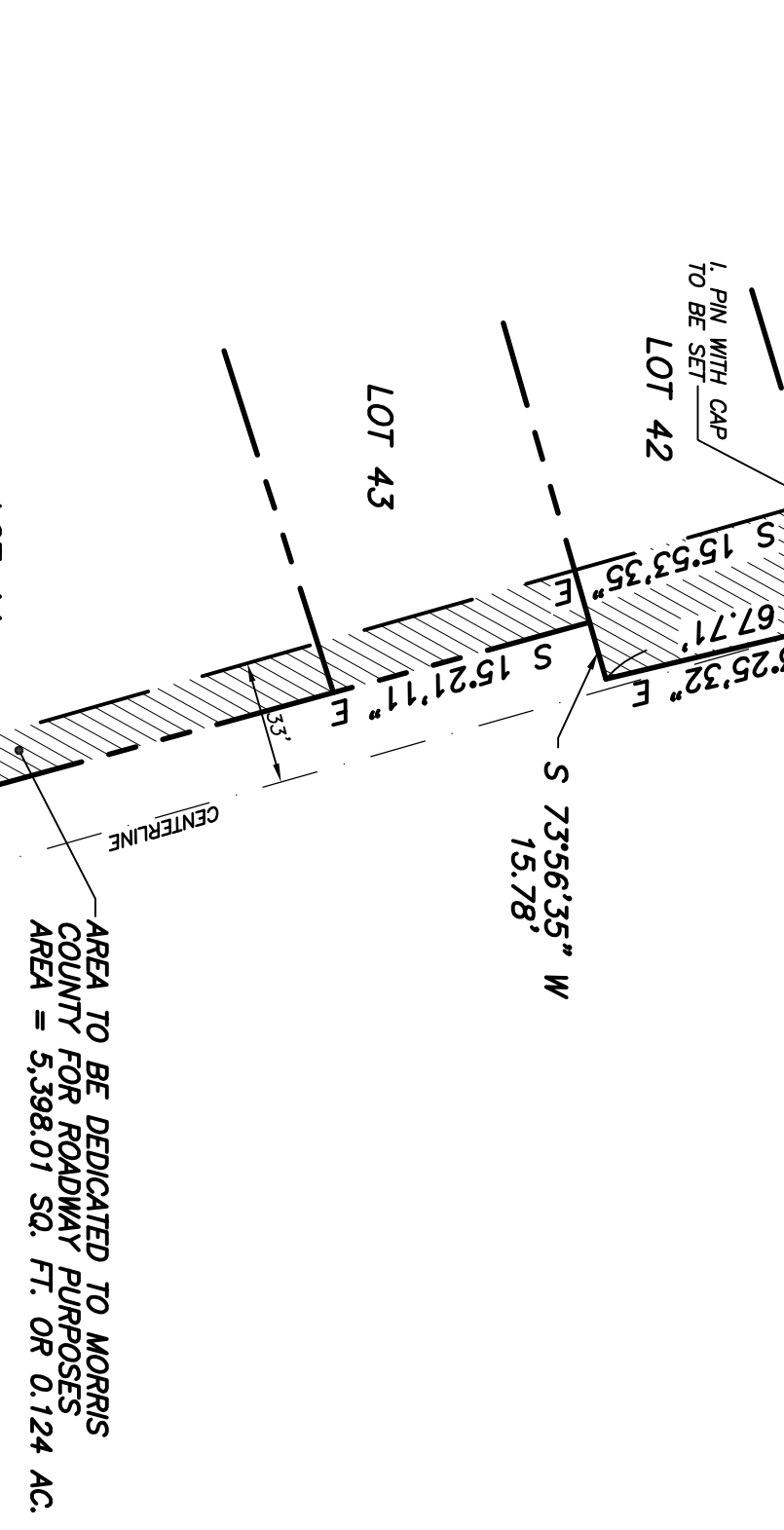
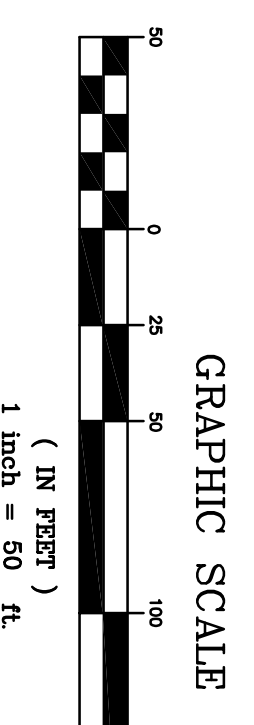
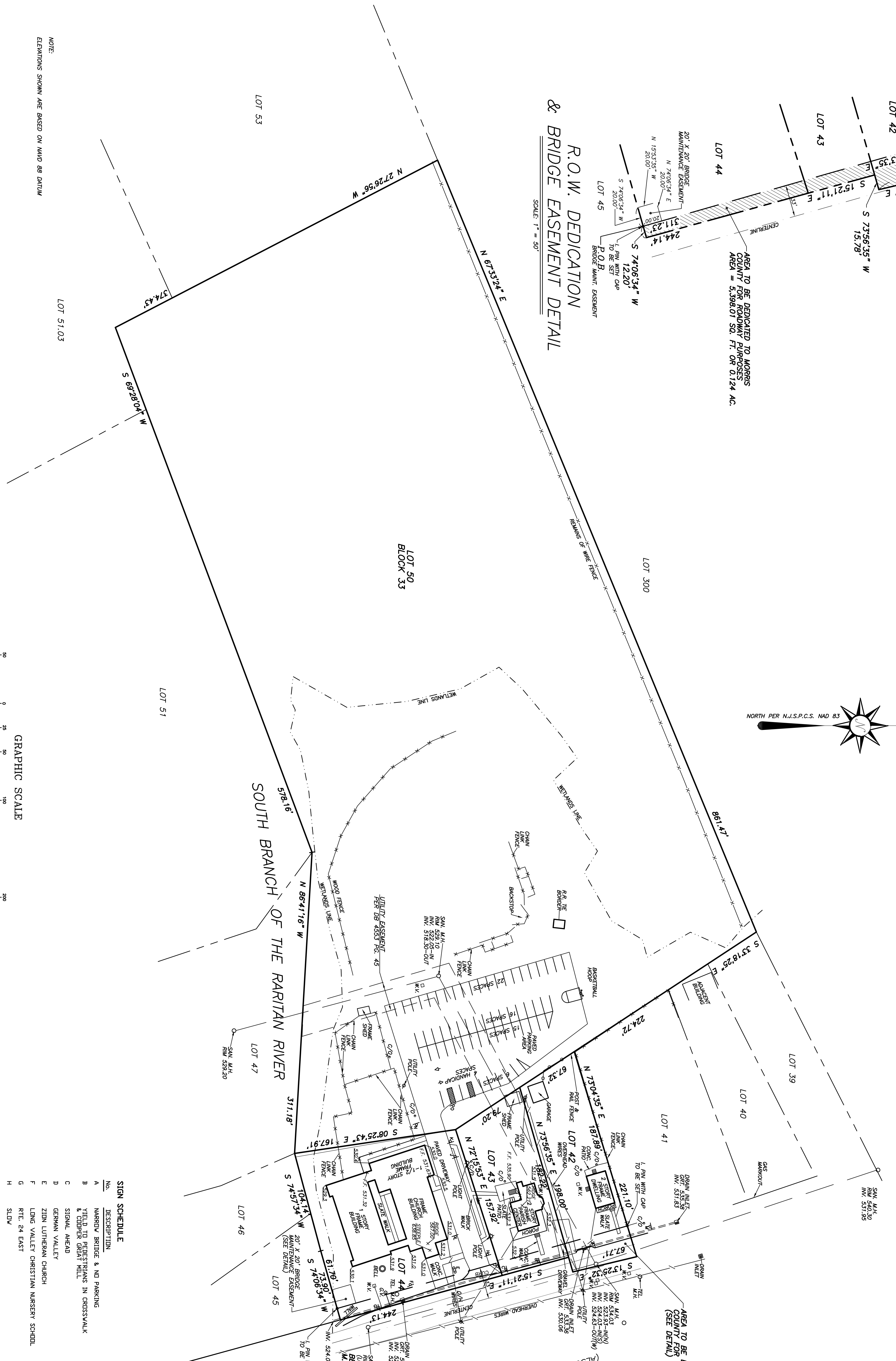
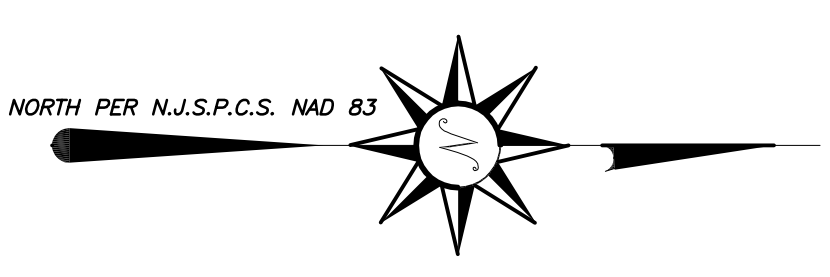


P.O.B. DEDICATION
END OF FIRST COURSE
DEED BOOK 5174 PAGE 64



**R.O.W. DEDICATION
& BRIDGE EASEMENT DETAIL**

SCALE: 1" = 50'



NOTE:
ELEVATIONS SHOWN ARE BASED ON NAVD 88 DATUM

MAP REFERENCES:
1. SURVEY OF LOTS 43, 44 & 50, BLOCK 33 BY YAMMACCONE ASSOCIATES, INC., DATED OCT. 13, 1998.
2. MAP OF PROPERTY OF TAX LOT 42, BLOCK 33, DECEMBER 18, 2002, LAST REVISED 1/08/03.

SIGN SCHEDULE

NO.	DESCRIPTION
A	NARROW BRIDGE & NO PARKING
B	YIELD TO PEDESTRIANS IN CROSSWALK & COPPER GREAT HILL
C	STIGNAL AHEAD
D	GERMAN VALLEY
E	ZION LUTHERAN CHURCH
F	LONG VALLEY CHRISTIAN NURSERY SCHOOL
G	RTE. 24 EAST
H	SLUD
I	PARISH CENTER
J	SLUD
K	STDP
L	SLUD
M	NO PARKING
N	SLUD
D	RESERVED PARKING (HANDICAP SYMBOL)

SCHOOLEY'S MOUNTAIN ROAD
(COUNTY ROUTE 517)
(ALSO DESIGNATED AS STATE HIGHWAY 24)

**YAMMACCONE
& ALDRICH, LLC**
MILLA
Professional Engineers & Professional Planners

480 MAIN STREET, P.O. BOX 459
CHESTER, NEW JERSEY 07930
PHONE: 908-679-6646
FAX: 908-679-6591

N.J. STATE BOARD OF P.E. & L.S.
CERTIFICATION OF AUTHORIZATION
NO. 24682(2)S(2)500

Christopher J. Aldrich
CHRISTOPHER J. ALDRICH
N.J. PROFESSIONAL SURVEYOR
NO. 34478 DATE 04/09/10

NO.	DATE	REVISION
1	12/23/08	REVISED PER COMPLETENESS
2	2/23/09	PER CTV. PLAN, REV. 11/24/08
3	11/06/09	RESUBSE
4	01/25/10	RESUBSE
5	02/07/10	ISSUED FOR BUS
6	02/26/10	RESUBSE
7	04/09/10	ISSUED FOR PERMIT REVIEW

NOT VALID WITHOUT SIGNATURE AND BASED SEAL

PROJECT TITLE:
**ZION EVANGELICAL
LUTHERAN CHURCH
PARISH CENTER ADDITION
PRELIMINARY & FINAL
MAJOR SITE PLANS**

11 SCHOOLEY'S MOUNTAIN ROAD
LOTS 42, 43, 44, 50 ~ BLOCK 33
WASHINGTON TOWNSHIP
MORRIS COUNTY, NEW JERSEY

SHEET TITLE:
**SURVEY OF
EXISTING CONDITIONS
AND DETAIL OF R.O.W.
DEDICATION &
BRIDGE EASEMENT**

DRAWN BY: *FB* DATE: AUG. 21, 2006

CHECKED BY: *CAH* SCALE: 1" = 50'

W.O. 206095
F.B. 666/34

FILE:
COMP. FILE:
E:\proj\206095\206095-5178\DWG-bridge.dwg

SHEET **3** OF **15**