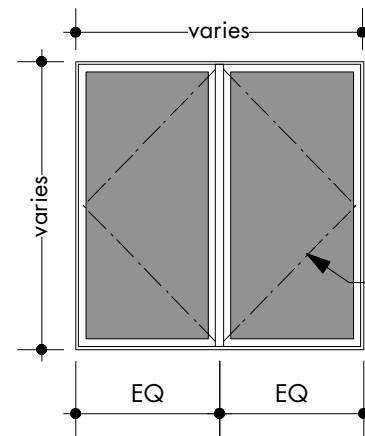


# Window Schedule

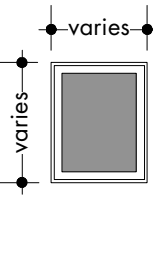
Window										Glass	
ID	Location	Type	Manuf.	Mdl.	Unit W.	Unit Ht.	Material	Description	Notes		
102	A Stair 102	B	Kolbe or equal	Ultra	KUW126S	2'0"	2'6"	wd/alum clad	LoE-270 insulating glass		
110	A Circulation 110	A	Kolbe or equal	Ultra	KUE26	6'0"	6'0"	wd/alum clad	LoE-270 insulating glass	Tempered glass	
110	B Circulation 110	A	Kolbe or equal	Ultra	KUE26	6'0"	6'0"	wd/alum clad	LoE-270 insulating glass	Tempered glass	
112	A Classroom 112	B	Kolbe or equal	Ultra	KUN26P	3'4"	6'0"	wd/alum clad	LoE-270 insulating glass	Tempered glass	
112	B Classroom 112	A	Kolbe or equal	Ultra	KUE26	6'0"	6'0"	wd/alum clad	LoE-270 insulating glass	Tempered glass	
112	C Classroom 112	A	Kolbe or equal	Ultra	KUE26	6'0"	6'0"	wd/alum clad	LoE-270 insulating glass	Tempered glass	
113	A Storage 113	B	Kolbe or equal	Ultra	KUW13	2'0"	3'0"	wd/alum clad	LoE-270 insulating glass		
114	A Storage 114	B	Kolbe or equal	Ultra	KUW13	2'0"	3'0"	wd/alum clad	LoE-270 insulating glass		
114	B Storage 114	B	Kolbe or equal	Ultra	KUW13	2'0"	3'0"	wd/alum clad	LoE-270 insulating glass		
115	A Entry 115	B	Kolbe or equal	Ultra	Standard w, Custom h	2'8"	7'7"	wd/ alum clad	LoE-270 insulating glass	Tempered glass	
115	B Entry 115	B	Kolbe or equal	Ultra	Standard w, Custom h	2'8"	7'7"	wd/ alum clad	LoE-270 insulating glass	Tempered glass	
116	A Men's Room 116	B	Kolbe or equal	Ultra	KUW13	2'0"	3'0"	wd/alum clad	LoE-270 insulating glass		
117	A Women's Room 117	B	Kolbe or equal	Ultra	KUW13	2'0"	3'0"	wd/alum clad	LoE-270 insulating glass		
118	A Kitchen 118	C	Kolbe or equal	Ultra	KU26203	7'6"	2'0"	wd/alum clad	LoE-270 insulating glass		
118	B Kitchen 118	B	Kolbe or equal	Ultra	KUW13	2'0"	3'0"	wd/alum clad	LoE-270 insulating glass		
202	A Stair 202	F	Kolbe or equal	Ultra	See elevation	7'0"	7'5"	wd/alum clad	LoE-270 insulating glass	Tempered glass	
203	A Stair 203	F	Kolbe or equal	Ultra	See elevation	7'0"	7'6"	wd/alum clad	LoE-270 insulating glass	Tempered glass	
210	A Corridor 210	B	Kolbe or equal	Ultra	KUW14	2'0"	4'0"	wd/alum clad	LoE-270 insulating glass		
211	A Classroom 211	B	Kolbe or equal	Ultra	KUN26P	3'4"	6'0"	wd/alum clad	LoE-270 insulating glass		
211	C Classroom 211	A	Kolbe or equal	Ultra	KUE26	6'0"	6'0"	wd/ alum clad	LoE-270 insulating glass		
211	D Classroom 211	A	Kolbe or equal	Ultra	KUE26	6'0"	6'0"	wd/alum clad	LoE-270 insulating glass		
212	A Classroom 212	D	Kolbe or equal	Ultra	KUW36PL	6'0"	6'0"	wd/alum clad	LoE-270 insulating glass		
213	A Classroom 213	B	Kolbe or equal	Ultra	KUW14	2'0"	4'0"	wd/alum clad	LoE-270 insulating glass		
213	B Classroom 213	D	Kolbe or equal	Ultra	KUW36PL	6'0"	6'0"	wd/alum clad	LoE-270 insulating glass		
214	A Foyer 214	J	Kolbe or equal	Ultra	See elevation	6'10"	7'5"	wd/ alum clad	LoE-270 insulating glass	Tempered glass	
214	B Foyer 214	J	Kolbe or equal	Ultra	See elevation	6'10"	7'5"	wd/ alum clad	LoE-270 insulating glass	Tempered glass	
215	A Classroom 215	D	Kolbe or equal	Ultra	KUW36PL	6'0"	6'0"	wd/alum clad	LoE-270 insulating glass		
216	A Classroom 216	D	Kolbe or equal	Ultra	KUW36PL	6'0"	6'0"	wd/alum clad	LoE-270 insulating glass		
216	B Classroom 216	A	Kolbe or equal	Ultra	KUE26	6'0"	6'0"	wd/ alum clad	LoE-270 insulating glass		
216	C Classroom 216	D	Kolbe or equal	Ultra	KUW36PL	6'0"	6'0"	wd/alum clad	LoE-270 insulating glass		
302	B Stair 202	B	Kolbe or equal	Ultra	KUW126S	2'0"	2'6"	wd/ alum clad	LoE-270 insulating glass		

- NOTES:**
1. Manuf. and mdl. noted above are provided as basis of design.
  2. All units to be aluminum clad with insulating glass.
  3. All units to meet or exceed Energy Star requirements.
  4. Provide screens for all operable units.
  5. Screens to be fixed screens with wood-wrapped screen frame and fiberglass mesh in charcoal.
  6. Crank out handle shall be satin nickel finish.
  7. All wood windows shall have stain grade Red Oak interior. Stain color TBD.
  8. All wood windows shall receive stain grade Red Oak stool, stain color TBD.
  9. Final unit approval to be by Architect.
  10. Dimensions shown are unit sizes.



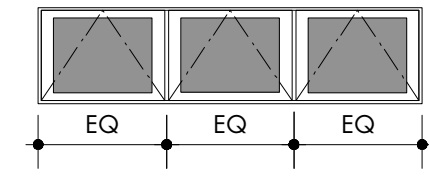
Double Unit:  
refer to schedule for size and accessories. SF varies.  
Glazing type GL-1

Type: A



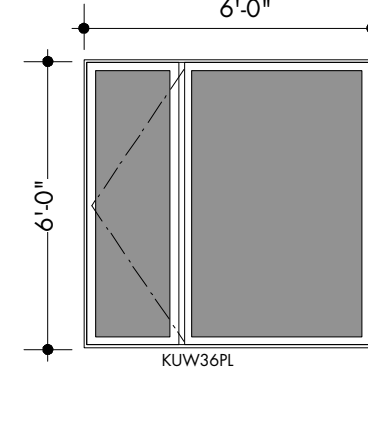
Single Unit:  
refer to schedule for operation, size, and accessories. SF varies.  
Glazing type GL-1

Type: B



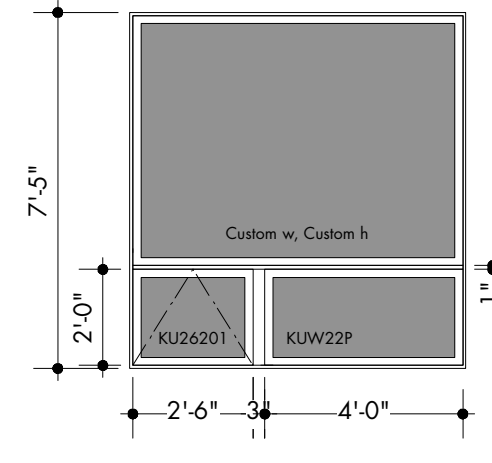
Triple Unit:  
refer to schedule for size and accessories. Glazing type GL-1

Type: C



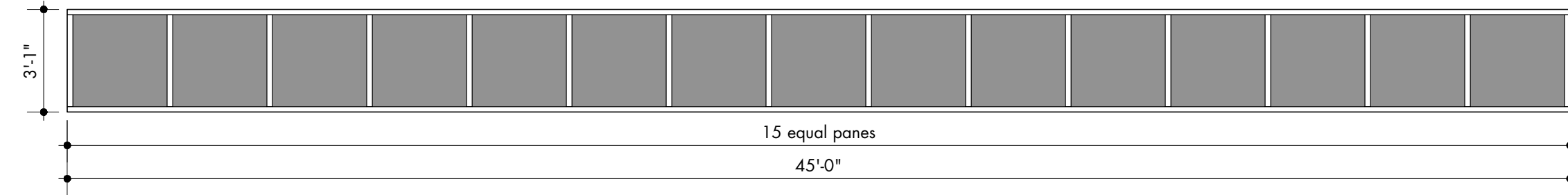
Double Unit, specialty:  
refer to schedule for overall size and accessories.  
Operations noted above.  
Glazing type GL-1

Type: D



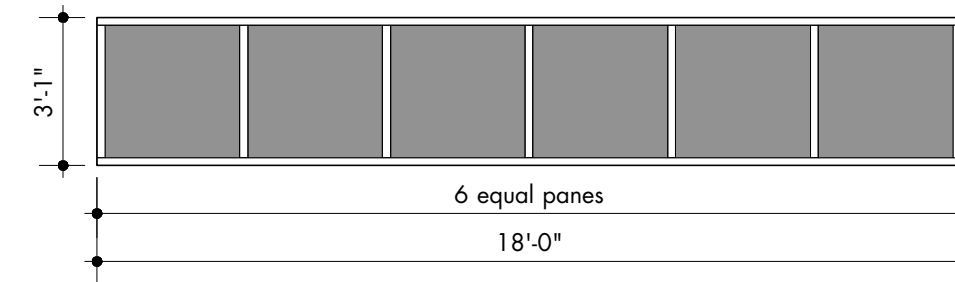
Specialty:  
sizes and operations noted above. Glazing type GL-1

Type: F



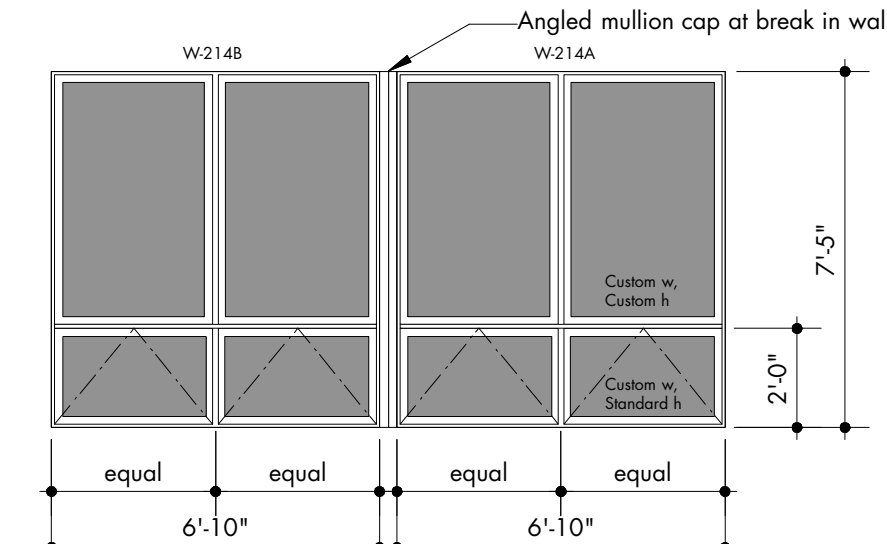
West Fellowship Hall Clerestory Window:  
Aluminum window wall w/1" insulating clear glass.  
Glazing type GL-2

Type: H.1



North Fellowship Hall Clerestory Window:  
Aluminum window wall w/1" insulating clear glass.  
Glazing type GL-2

Type: H.2



Type: J

## 31 Window Type Elevations

Scale: 1/4" = 1'-0"

NOTE: Tempered glazing required per section 2406.3 of the 2006 IBC.



439 South Broad Street Suite 310  
Trenton, New Jersey 08611  
609 397 0095 / 609 858 0366

www.mcauliffe-carroll.com

James McAuliffe, AIA  
Richard Carroll, AIA LEED AP  
PA 12023

# New Parish Center and Facilities Renovations

Zion Evangelical Lutheran Church  
11 Schooley's Mountain Road  
Washington Twp., Morris County NJ 07853

No.	Date	Issue Name
5	4/29/10	Issued for Permit
3	2/27/10	Issued for Bid
2	1/23/09	Issued for Pre-Bid Cost Estimating
04	9/16/09	Design Development Issue

Date	
CAD File Name	0920A9 Series
Project Manager	CSB
Drawn By	
Checked By	
Project ID	0920
Drawing Title	Window Schedule
Drawing Title	Window Type Elevations

Drawing No.

A92